

# Terrain representation in small-scaled maps



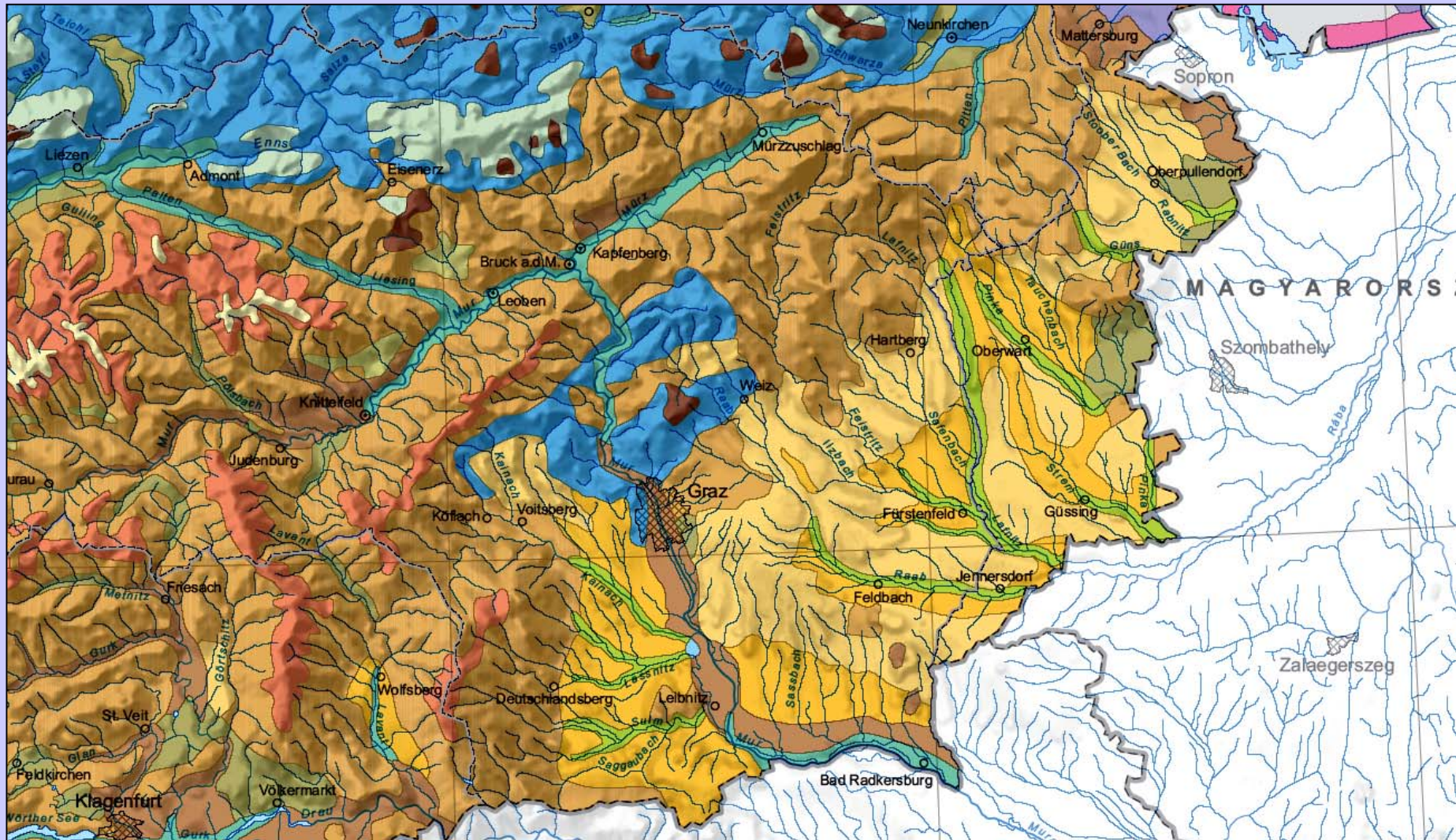
Heuberger Michael, Karel Kriz

Department of Geography and Regional Research  
University Vienna

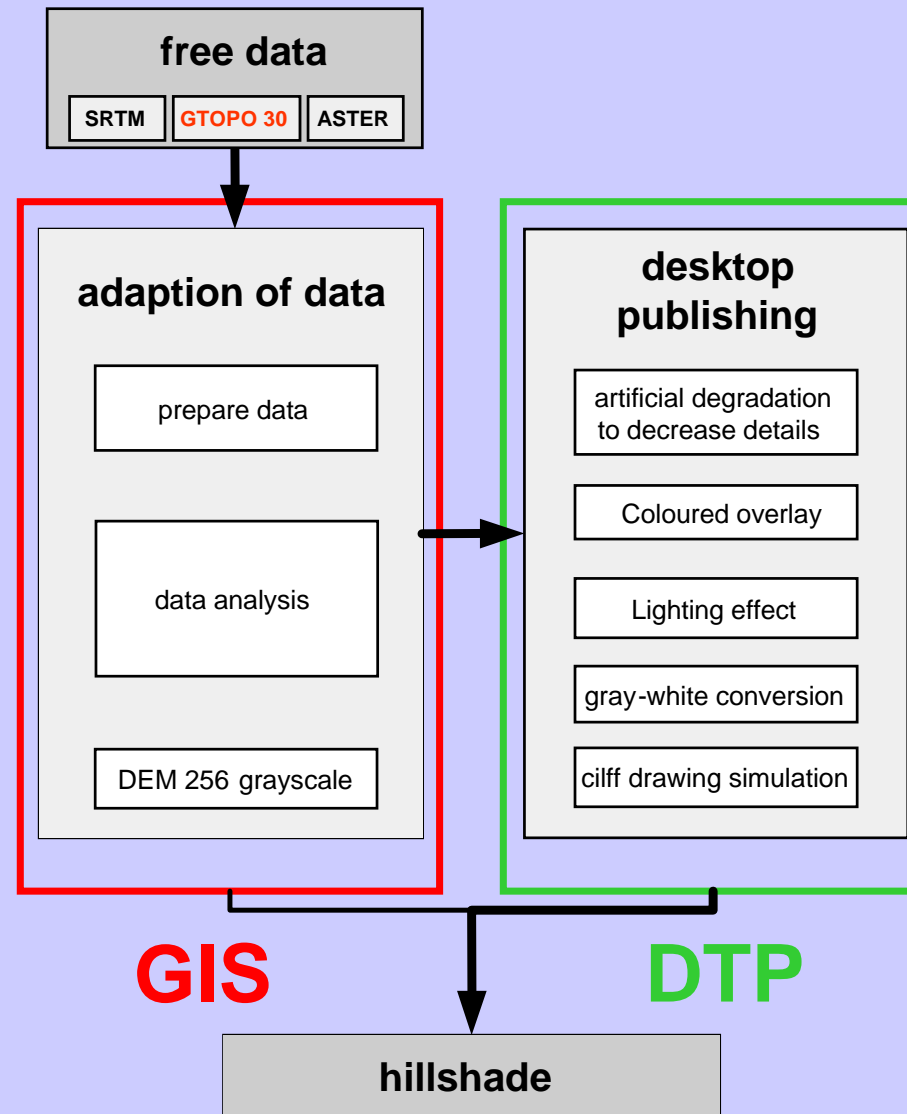




**Hillshade....** is making your map more aesthetic and comprehensible. It is easier to recognize the correlation between relief and thematic information, and easier to orient

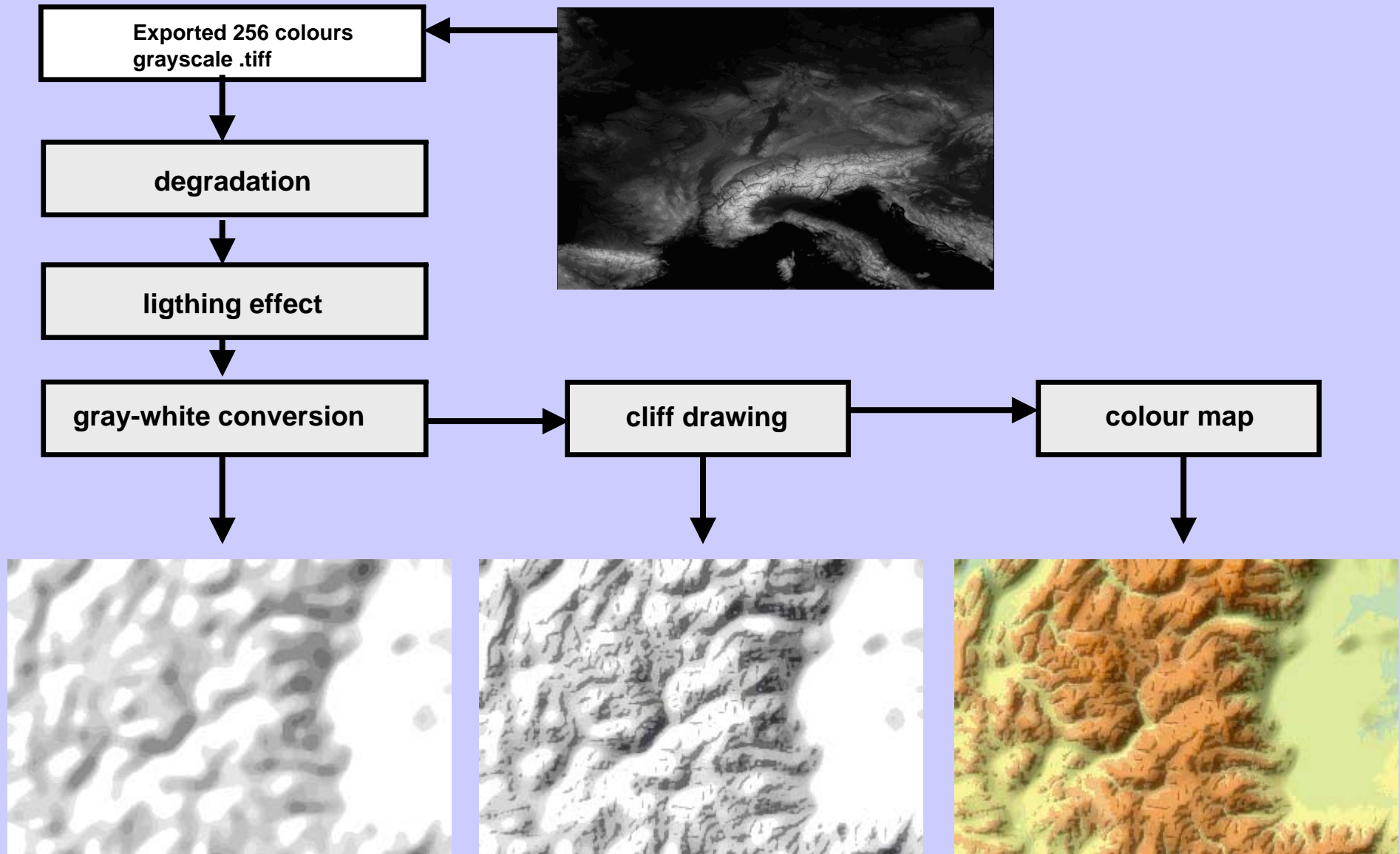


# Work flow





# Desktop publishing

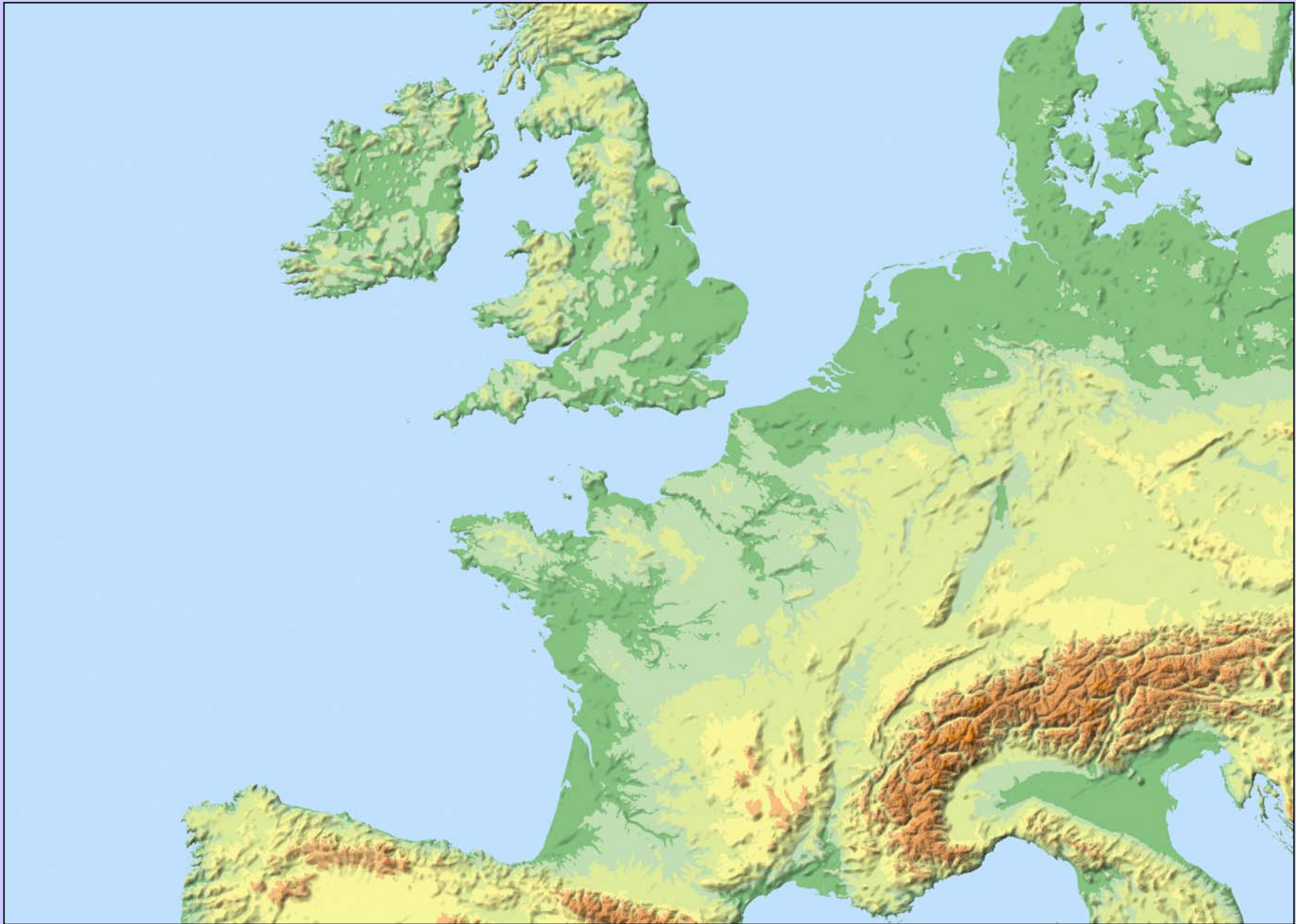


# Desktop publishing

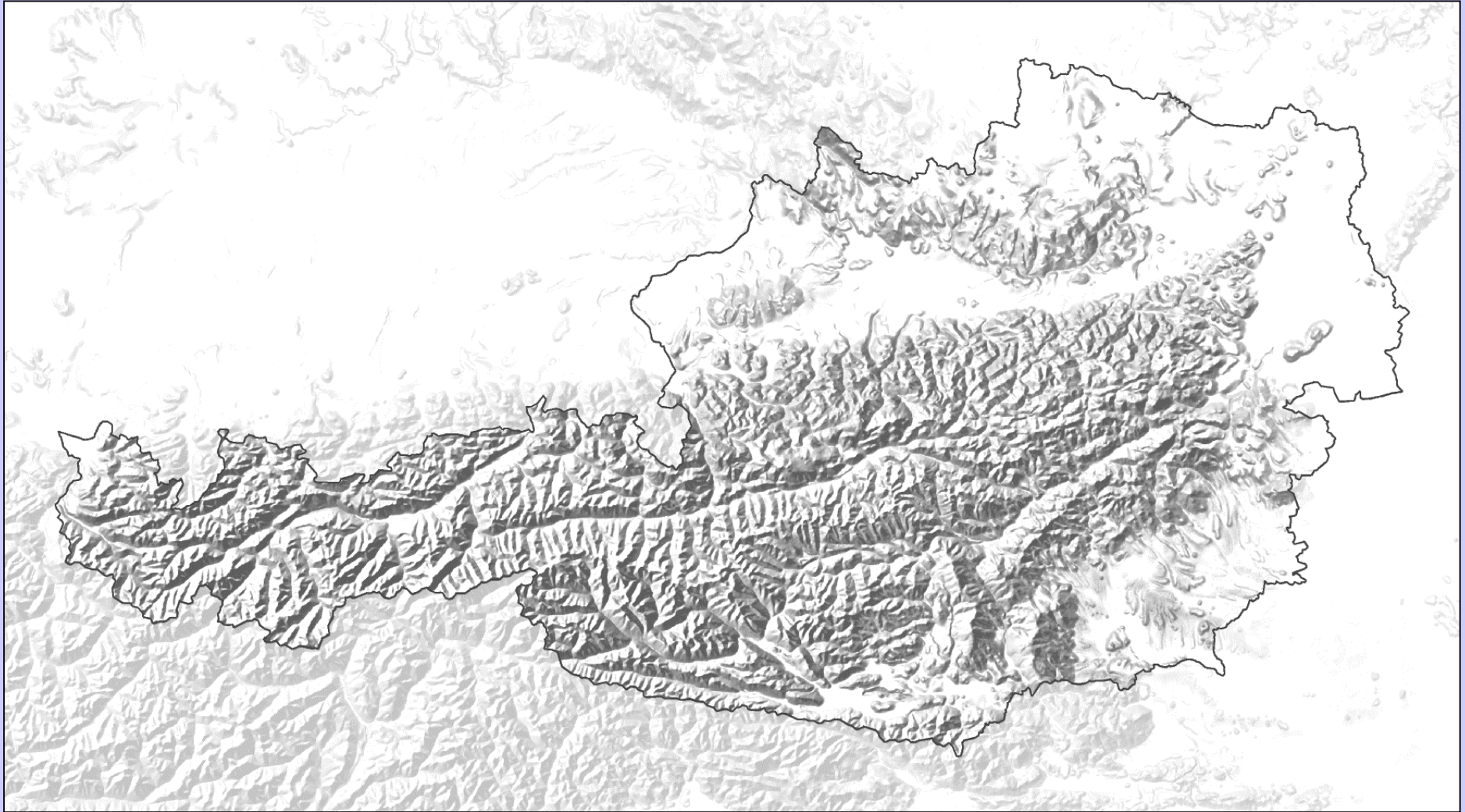




# Result

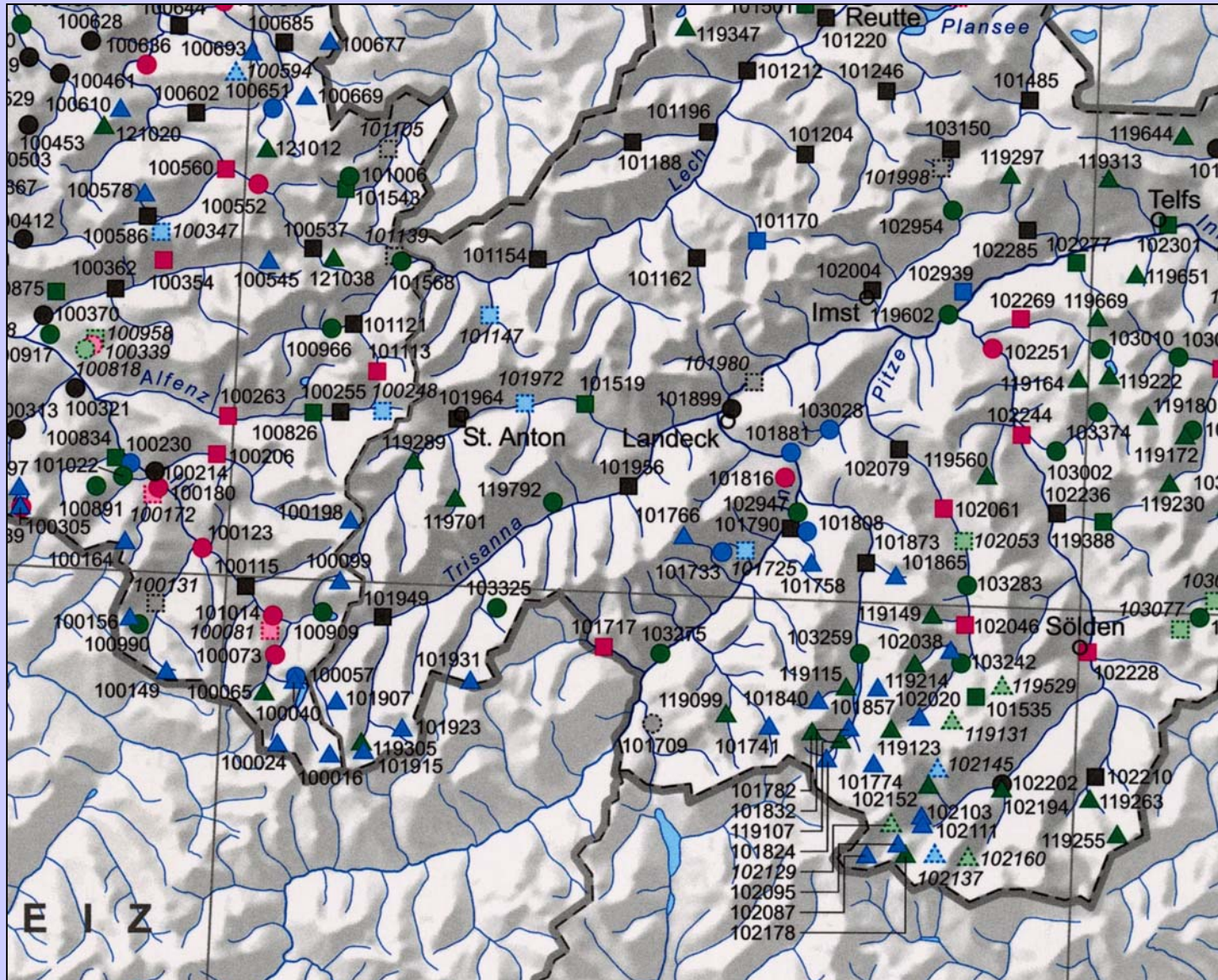


# Hillshade of HAA





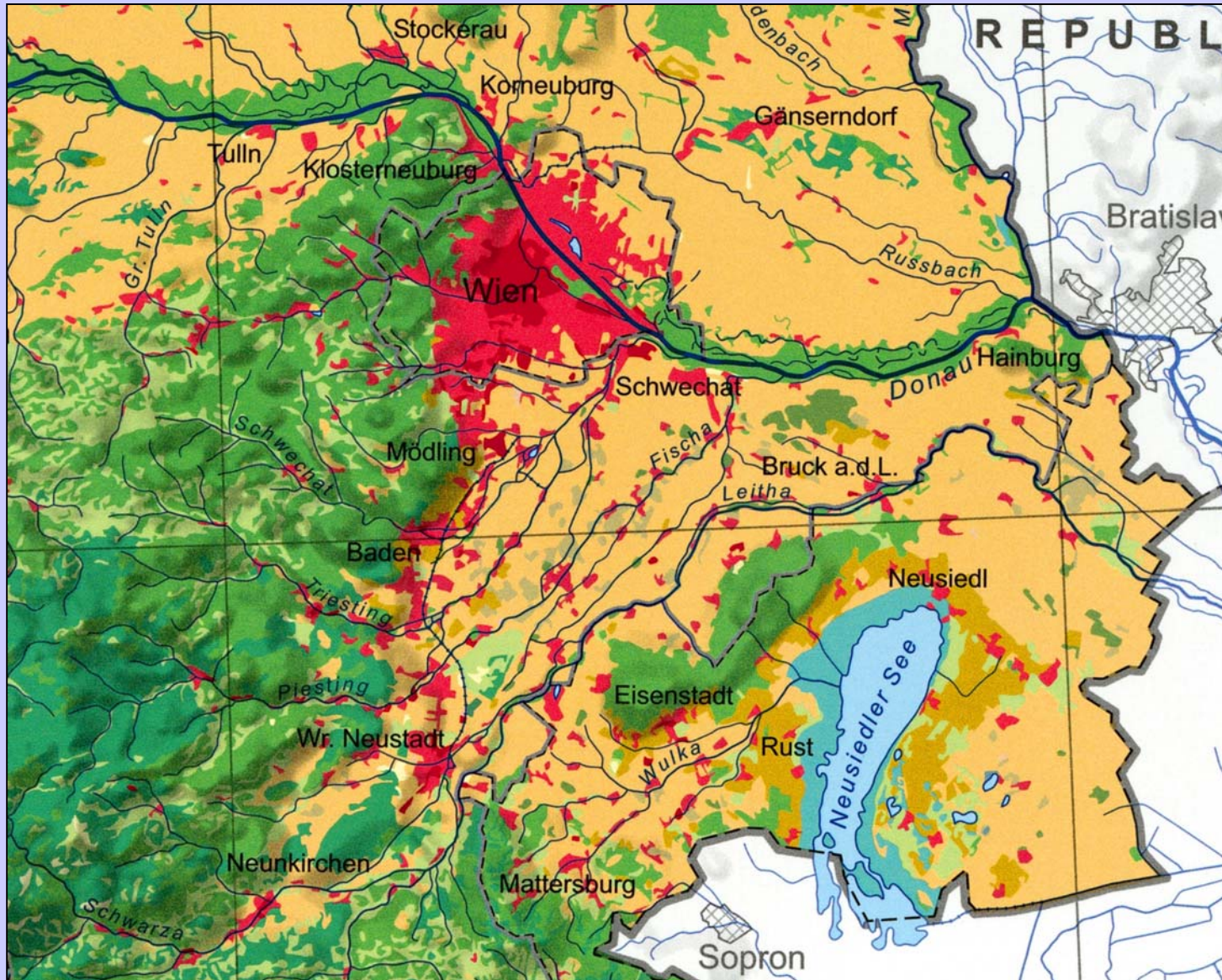
# Examples of HAA



Precipitation stations



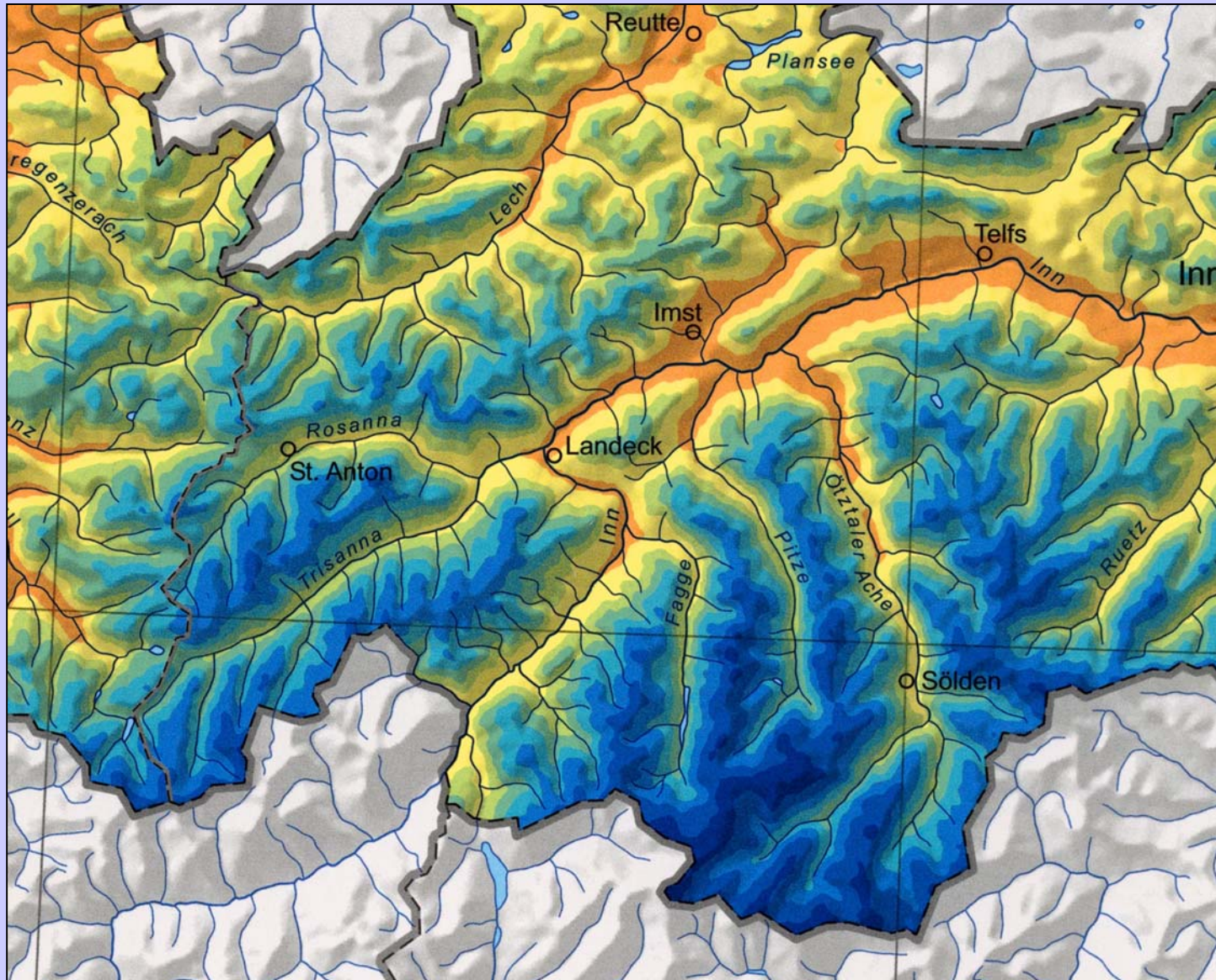
# Examples of HAA



Land cover



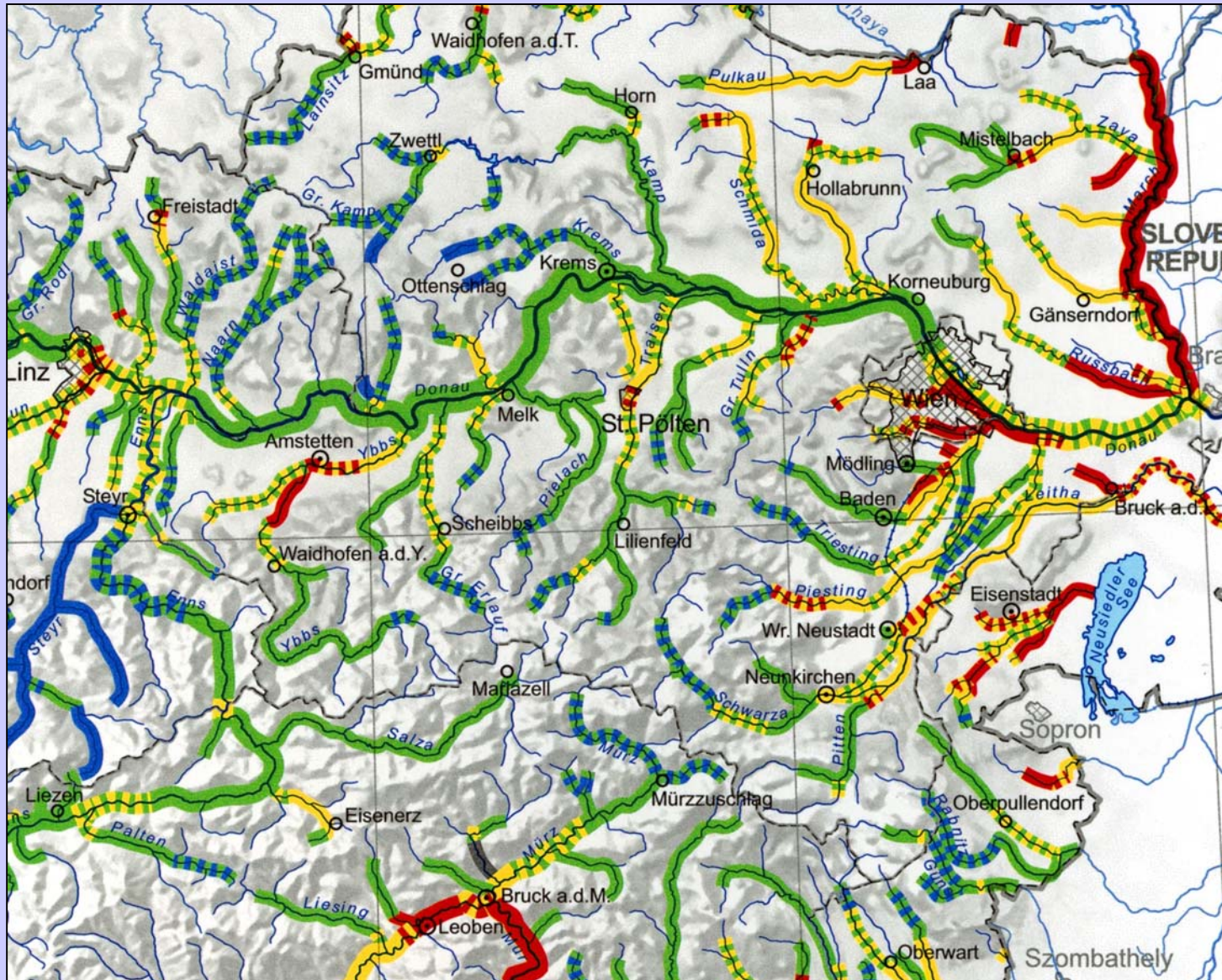
# Examples of HAA



Mean annual precipitation



# Examples of HAA



Biological water quality of rivers



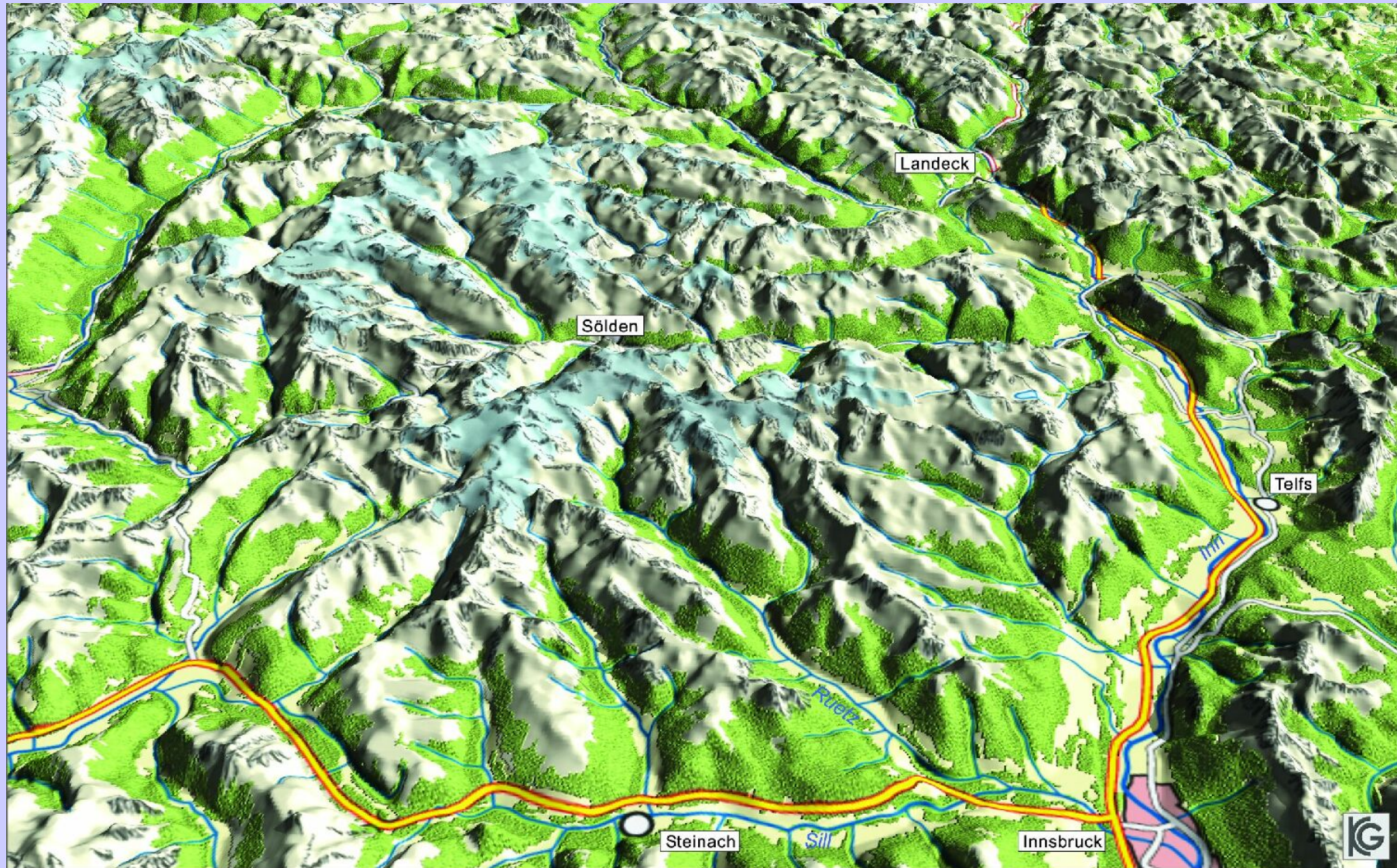
# Examples of HAA



Topographic overview map



# Examples of HAA



Topographic overview map



# Terrain representation in small-scaled maps



Heuberger Michael, Karel Kriz

Department of Geography and Regional Research  
University Vienna